

eLoxx 365 Enterprise

Cloud-based management software for centrally powered locker locking systems

FACTS AT A GLANCE

- **Extended API integration:** Seamless connection to third-party systems for individual customization
- **LockPal 365 App (IOS/Android):** Mobile authorizations for flexible and secure locker use
- **High scalability:** Management of complex systems with a high volume of lockers
- **Comprehensive security features:** Including SSO, two-factor authentication, detailed audit logs, and real-time monitoring
- **Central cloud management:** Remote setup, routine updates and unified system control via a single platform
- **Comprehensive reports:** Detailed analytics on system performance, user activity, and security incidents
- **Automated workflows:** Streamlining routine processes to boost efficiency and reduce manual effort

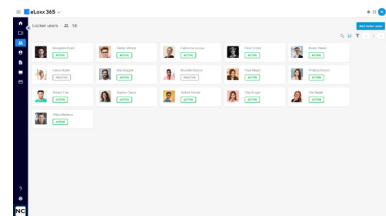
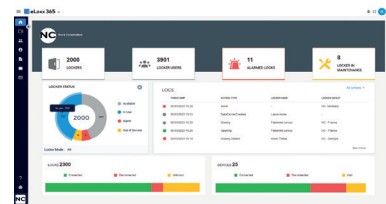


eLoxx 365 is a subscription-based (SaaS) locker management platform compatible with GAT NET.Lock locks, GC7 controllers, and Gantner’s G7 devices. As a browser-based web application, it requires no local software installation and is accessible from any location.

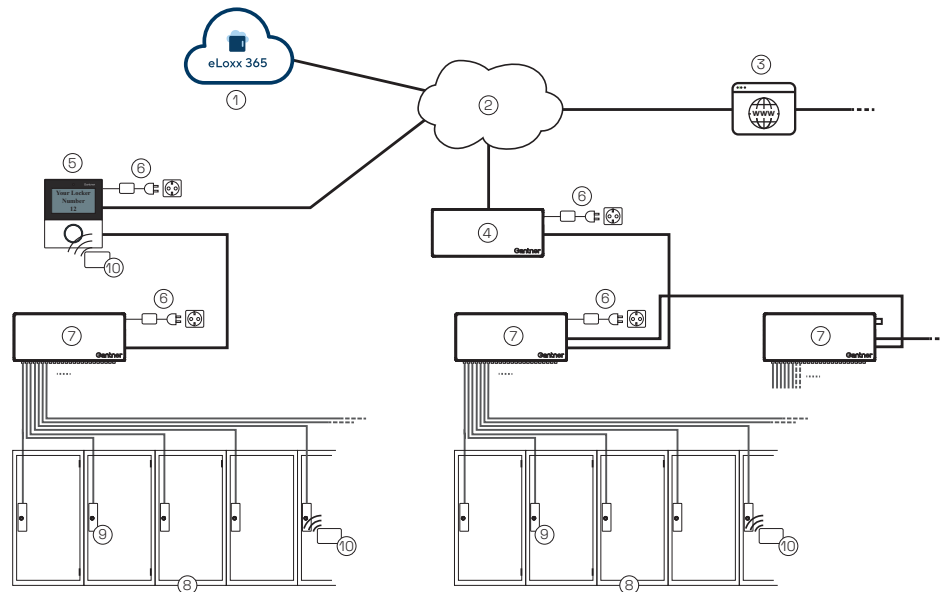
Two versions are available: eLoxx 365 Lite and eLoxx 365 Enterprise.

Functionality	Lite	Enterprise
Basic locker management	✓	✓
Automation Tasks	Limited	✓
Reports	Limited	✓
Number of locks	Max. 1000	✓
LockPal 365	✗	✓
System API	✗	✓

eLoxx 365 offers effortless configuration and management of lockers and users, with real-time break-in alerts for secure storage. Subscription packages (GSC) are tailored to system size and needs. The system supports everyday tasks including adding users, updating permissions, blocking lost credentials, tracking locker use, and guiding visitors to unused lockers. Upon login, users are greeted by a dashboard displaying locker usage, user actions, and active alarms. Key features such as locker overview, user management, and reservations are accessible via the sidebar.



Typical application



- | | |
|--|---|
| 1. eLoxx 365 Enterprise on server | 6. Power supply |
| 2. LAN network (TCP/IP) | 7. Control unit (sub controller) |
| 3. Web browser operation of eLoxx 365 Enterprise | 8. Lockers |
| 4. Control unit (main controller) | 9. Electronic lock (e.g. GAT NET.Lock 70x0) |
| 5. GT7 Central Locker | 10. RFID data carrier for identification |

Order information

Description	Part No.
eLoxx 365 Enterprise 100 - GSC yearly	1111556
eLoxx 365 Enterprise 250 - GSC yearly	1111557
eLoxx 365 Enterprise 500 - GSC yearly	1111558
eLoxx 365 Enterprise 750 - GSC yearly	1111559
eLoxx 365 Enterprise 1000 - GSC yearly	1111560
eLoxx 365 Enterprise 1500 - GSC yearly	1111561
eLoxx 365 Enterprise 2000 - GSC yearly	1111562
eLoxx 365 Enterprise 3000 - GSC yearly	1111563
eLoxx 365 Enterprise 5000 - GSC yearly	1111564
eLoxx 365 Enterprise 7500 - GSC yearly	1114367
eLoxx 365 Enterprise 10000 - GSC yearly	1113211

Subscription to manage users and configure locker locks in the cloud-based locker management software eLoxx 365 Enterprise. The max. number of locks that can be managed is shown in the description (100, 250, 500, etc.).

eLoxx 365 Add-on for 100 LockPal 365 users - GSC yearly	1111666
Subscription with annual billing for eLoxx 365 Enterprise for 100 additional mobile access authorizations. The Enterprise package already includes as many mobile access authorizations as the number of locks included. Example for 1300 users: 3 x "eLoxx 365 Add-on" annual subscriptions are required together with the article "eLoxx 365 Enterprise 1000 - GSC annual"	

GSC contract conditions

The unlimited contract starts on the first day of the following month after delivery. Termination is possible at the earliest on December 31st of the following year, subject to a three-month notice period. Invoices are issued in advance for the period up to the end of the calendar year. A refund of amounts already paid is not possible. All fees are subject to the legally applicable value added tax. It is agreed that the value of the claim shall remain stable. The value of the claim shall be indexed according to the HICP 2015 (harmonized European consumer price index) or the locally applicable consumer price index. The starting point for the index adjustment as of January 1st is in each case the published index figure of the month of September. Gantner's terms and conditions are deemed to have been agreed, available at: <https://www.gantner.com/general-terms>